



## Lyle L. Irwin

May 4, 1917 - December 29, 2015

### Lyle Leo Irwin

Lyle passed away on Tuesday, December 29, 2015 at the age of 98, with his family by his side. Lyle (called “Murph” by many close friends) was born on May 4, 1917 in Devil’s Lake, North Dakota where his parents were wheat farmers. At an early age, the family moved to Aberdeen, Saskatchewan, Canada where he lived to the age of 15. He was preceded in death by his twin brother (Loren), 8 other siblings and step-siblings, in addition to two wives (Josie Percy and LureBelle Looney).

He returned from Canada to the United States and joined the Navy in 1937, where he served for 20 years. He served aboard the light cruiser “The Santa Fe” during WWII, navigating in the Pacific Ocean, and was stationed in Japan during the Korean War. During his tour of duty in Japan, Lyle and his wife, Josie became parents of their daughter, Madeline.

After retirement from military service, in 1957, the family moved to Wenatchee, Washington where he was employed as a meat cutter for the following 21 years. During the following several years he was a member of Fleet Reserve, the Wenatchee Elks Lodge, and a member of St. Joseph Catholic Church in Wenatchee for more than 50 years. Up until several years ago, Lyle was an ardent fisherman and enjoyed many hours fishing on lakes and rivers, as well as deep sea fishing in the Pacific Ocean. However, as of the most recent years, he has replaced the more energetic sports for travel and vacations via plane, car and cruise ships.

After the death of his wife, LuraBelle, Lyle married Pencie Williams who passed away on March 10, 2014 of Wenatchee. Survivors include his daughter Madeline Applegarth of Spokane; step-daughters Carla Reeves (Bob) of East Wenatchee; Susan (Tom) Morgan of Arizona; Sue Foster of Everett; and great grand-Children complete Lyle's immediate and extended family.

Private Family Graveside Service will be held with Military Honors at Wenatchee City Cemetery. Please express your thoughts and memories on the online guest book at [jonesjonesbetts.com](http://jonesjonesbetts.com). Arrangements are by Jones & Jones – Betts Funeral Home.

# Tribute Wall



“ *Murph and my father used to take me fishing up at Lake Chelan in the late sixties and early seventies. We'd take his fishing boat behind the Scout up above Kelly's. I was maybe 13 years old and while putting a worm on the hook I lost it overboard. For as long as I can remember he would tease me about washing my worms. Murph was a wonderful man and I thank god for knowing him.*

*Fred Franklin*

---

**Fred Franklin** - January 12, 2016 at 12:01 AM



“ *I enjoyed many conversations with Lyle at Smittys. He was a sweetheart. Rest in peace Lyle.*

---

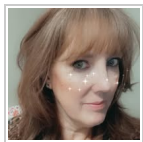
**Lorrie Bradley** - January 11, 2016 at 06:50 PM



“ *Lyle....we miss you! You had so many girlfriends here at Blossom Valley. We all loved you like our Grandpa, which many of them called you. You are stronger than anyone I know. You are at peace now and whole. Love you.....Rhonda*

---

**Rhonda Bellinger** - January 08, 2016 at 03:12 PM



“ *Sweet Lyle, I will miss your sweet face everyday!*



---

**Stephanie Sawyer** - January 01, 2016 at 08:44 PM